



# GROWING TOGETHER

2021 Annual Report



# Table of Contents

Introduction	3
Mission & Program	5
2021 Impact	8
Family & Mentor Demographics & Outcomes	10
Financials	22
Staff	23
Donors	24
Partners	25
Onward Together	26
Together for Families	28

# 2021: Leaning into Growth

## During 2021 we **LEANED INTO GROWTH AND IMPACT** in pursuit of our big dream: **EQUITY FOR ALL FAMILIES.**

Our goals and achievements took on new depth as we focused on quality while continuing to grow in quantity:

- Families served increased from 165 to 208 (696 individuals)
- Robust internal focus on Equity, Diversity, and Inclusion
- Major development of our Economic Mobility Program
- Six joyful family fun events, logging 194 attendances
- Raised more than \$1,000,000 in grant funding
- Hired 9 staff
- [GROUNDBREAKING RESEARCH WITH USC](#) on the impact of the social benefits system on working families
- Created our 2022-2024 Strategic Plan

Thank you to our community of families, staff, board, donors, volunteers, and partners for your steadfast support. In 2021, we leaned in together, and Imagine LA's future has never been brighter.

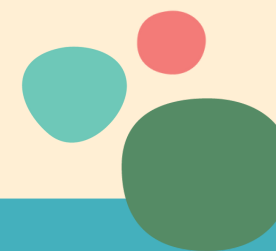
Together for Families,

**Jill Bauman**  
CEO & President

**Teddy Kapur**  
Board Chair

**Jill Martin**  
Board Vice Chair

[Underlined + orange indicates URL](#)



As we report on our work in 2021, we can't help but reflect on the context in which we began the year. As the COVID-19 pandemic wore on, we found a rhythm in the "new normal." We built upon the adaptations we made in 2020 to meet our families, partners, and staff where they are, and this allowed us to deepen and evolve our programs and relationships — to **LEAN IN TOGETHER.**

By year end, we achieved major organizational alignment through the development of a new strategic plan that will guide our future work to end the cycle of family poverty and homelessness.

# Board of Directors

## **Teddy Kapur\***

Chair, Board of Directors  
Partner, Pachulski Stang Ziehl & Jones LLP

## **Jill Martin**

Vice Chair & Treasurer, Board of Directors  
COO, Cedars-Sinai Medical Network

## **Troy Brown**

Secretary, Board of Directors  
Chair, Community Engagement Committee  
VP, Director of Recruitment, Enrollment  
& Marketing, UWLA

## **Barbara Bouza FAIA**

Co-Chair, Human Resources & EDI Co-Chair  
President, Walt Disney Imagineering

## **Lindsay Dunn**

Chair, Finance Committee  
Executive Vice President of Real Estate  
Banking, City National Bank

## **Dana Kiesel, PhD\***

Chair Emeritus, Board of Directors  
Chair, Program Committee  
Clinical Psychologist, Dana Kiesel PhD

## **George Phillips, Jr.\***

Chair, Governance Committee  
Partner, Phillips Law Partners LLP

## **Cambria Tortorelli**

Chair, Human Resources & EDI Committee  
President & CEO, International Institute  
of Los Angeles

## **Joe Takai**

Chair, Strategic Planning Task Force  
Community Engagement Committee  
Partner, McKinsey & Company

## **Terry Lovell Brown**

Community Engagement Committee  
Senior Pastor, Liberty Baptist Church

## **Gary Hunt\***

Finance Committee  
IP Licensing Manager, Cadence Design Systems

## **John Terzian**

Community Engagement Committee  
Nightlife Entrepreneur - Founding Partner,  
The H. Wood Group



\*Previous Imagine LA mentor

# Our Mission



**Dedicated to ending the cycle of family poverty and homelessness.**

**Together with families, we transform lives by building relationships, wellbeing, and economic mobility.**

**IMAGINE**  
**LA**  
**TOGETHER**  
**FOR**  
**families**



# Family Partnership Model



## FAMILIES ENTER IMAGINE LA'S ECOSYSTEM

Families that have experienced homelessness are referred to Imagine LA by social services agencies.

We come alongside them with love and respect on the First Step of their journey out of poverty.



## A DEDICATED SOCIAL WORKER PARTNERS WITH THE ENTIRE FAMILY

Compassion. Advocacy. Resilience. Equity.

Caring, holistic case management helps families identify their needs, goals, and clear pathways to success.



## FAMILIES ACCESS PATHWAYS AND BUILD SKILLS TO FINANCIAL INDEPENDENCE

- Access to living-wage careers and training
- Safe and affordable childcare solutions,
- Comprehensive Financial Fitness curriculum
- Tools and skills to navigate the complex social safety net



## 1-ON-1 MENTOR FOR EVERY MEMBER OF THE FAMILY

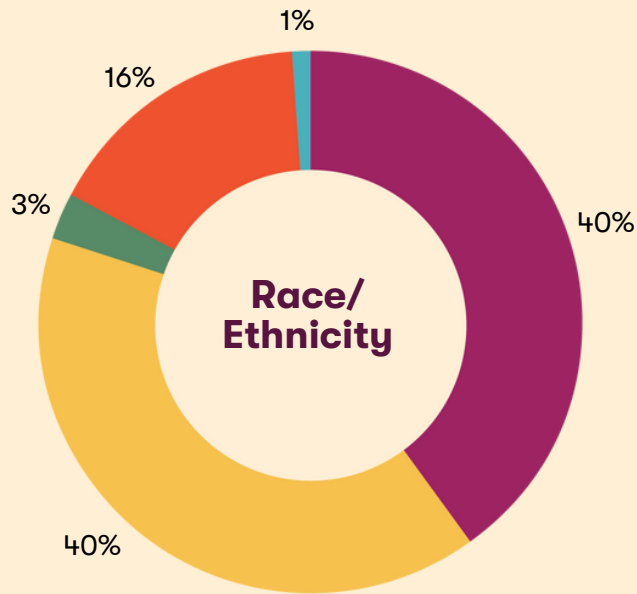
Trained volunteer members serve as friends and allies to every parent, teen, and youth in our program ages 5 and up.



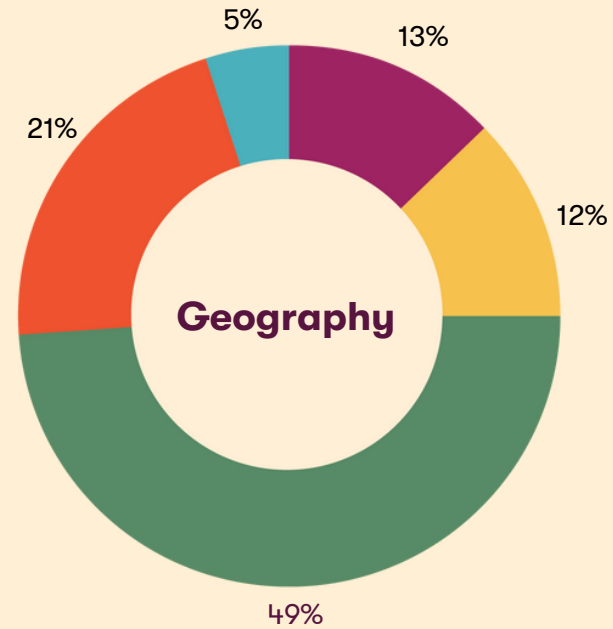
## PROGRAM GRADUATES CAN BE PART OF OUR FAMILY FOREVER

Alumni continue breaking the cycle of two-gen poverty through access to Economic Mobility programming, family fun events, and lasting staff and mentor relationships.

# Our Families



RACE/ETHNICITY	2021
● Black or African American	40%
● Latino	40%
● Asian American/Pacific Islander	3%
● White	16%
● Native American	1%



SERVICE PROVIDER AREA (SPA)	2021
● Antelope Valley (SPA 1)	0%
● San Fernando Valley (SPA 2)	13%
● San Gabriel Valley (SPA 3)	0%
● Metro LA (SPA 4)	12%
● West LA (SPA 5)*	0%
● South LA (SPA 6)	49%
● Southeast LA (SPA 7)	21%
● South Bay (SPA 8)	5%

\*Missouri Place (West LA) family intake began in late 2021, and families will move in beginning March 2022.

# Our Families

**44%**  
have  
experienced  
family violence

**71%**  
of family  
homelessness is tied  
to financial hardship

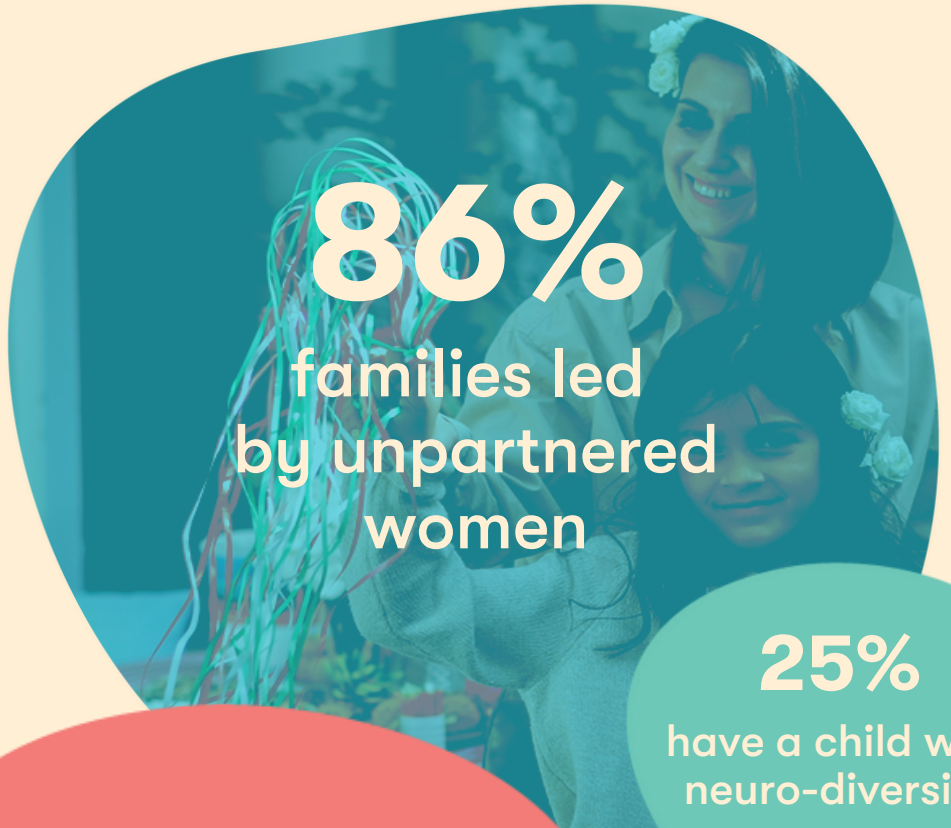
**12%**  
have been in the  
child welfare system

**47%**  
have experienced  
mental health  
challenges

**16%**  
have  
experienced  
substance  
use issues

**86%**  
families led  
by unpartnered  
women

**25%**  
have a child with  
neuro-diversity





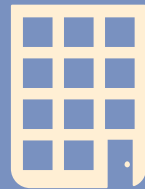


# More Families Breaking the Cycle

208 families (696 individuals) impacted – a 26% increase over 2020 and a twofold jump since 2019



50 ALUMNI FAMILIES  
(165 INDIVIDUALS)



8 FAMILIES MOVED INTO CALIFORNIA LANDMARK GROUP'S LUXURY G8 APARTMENTS IN MARINA DEL REY



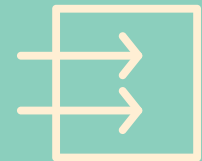
15 FAMILIES SERVED THROUGH OUR LICENSED AFFILIATE, THE WHOLE CHILD



37 FAMILIES PREVENTED FROM HOMELESSNESS  
(134 INDIVIDUALS)



62 FAMILIES LIVING IN SCATTERED SITE HOUSING (FAMILY PARTNERSHIP MODEL)



37 FAMILIES BEGAN INTAKE PROCESS FOR MISSOURI PLACE (PSH)

## Family Metrics

% maintained housing stability

% of households with an able-bodied head of household that have at least one adult who is employed, enrolled in school, or enrolled in a workforce development program.

% received a wellness exam within the past 12 months.

% report that Imagine LA is attentive and responsive to their needs & requests.

% report that Imagine LA helps them to build confidence in their ability to achieve their goals & influence their future.

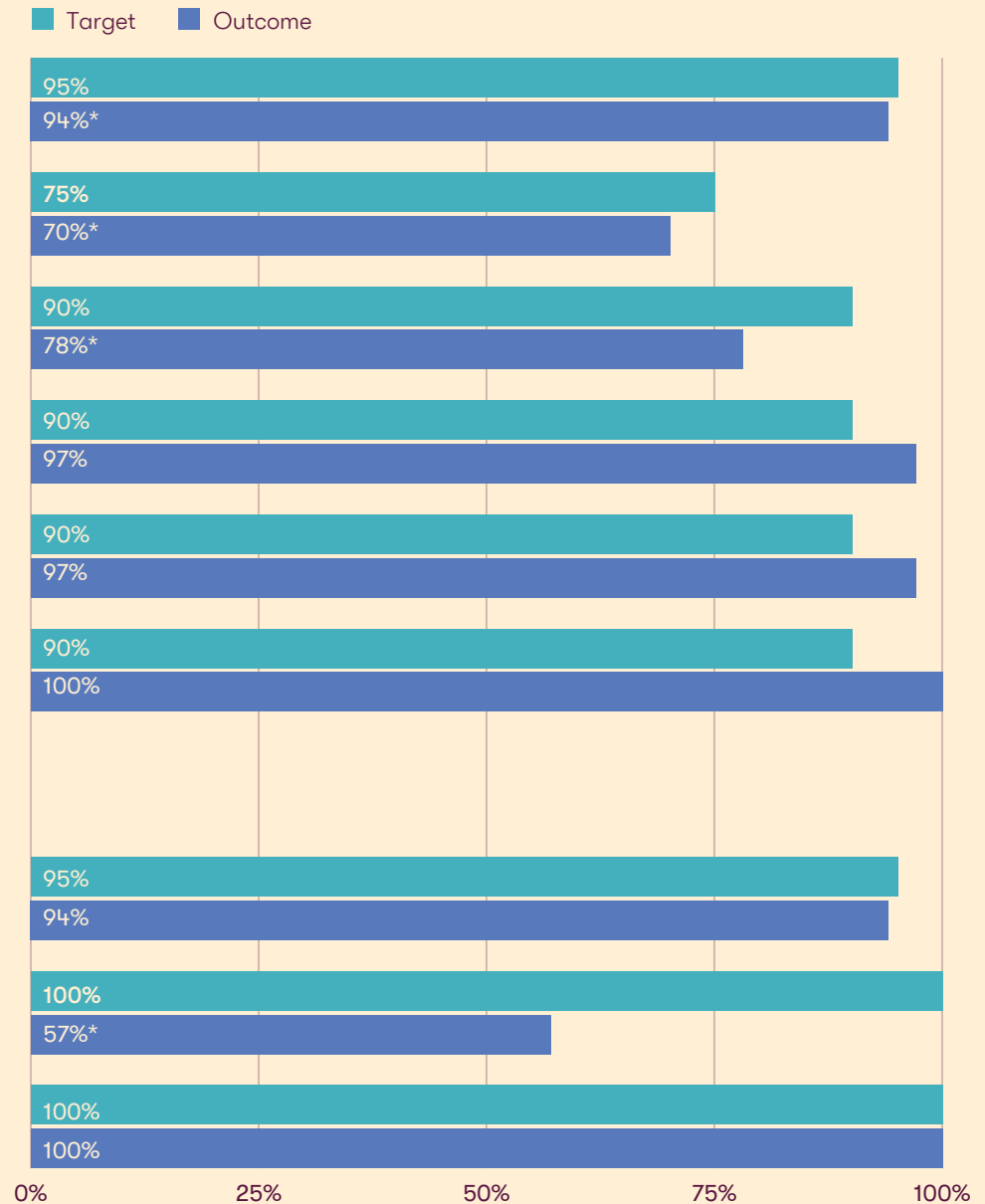
% report feeling empowered to face & resolve the challenges in their life.

## Children Metrics

% of school-aged children are equipped and enrolled in school and/or on a postsecondary pathway.

% of children ages 6-18 with neurodiversity are receiving necessary support and advocacy (around IEPs, 504 plans, etc.).

% of children ages 0-5 receiving ASQ assessments resulting in linkage to appropriate services



\*The second year of the global pandemic continued to limit our families' capacity and confidence to address some of their basic and advanced needs, despite our case managers' encouragement and efforts to provide resources and support. Families' abilities were also limited due to fear (e.g., of illness, systems), lack of access to supports (e.g., some school-based services), having to care for children at home, and other unforeseen challenges that the pandemic presented, in addition to systemic factors like institutional racism and sexism, our housing affordability crisis, and the social safety net, which we know [traps families in poverty](#).



# DISRUPTING

# POVERTY

## through **Economic Mobility**

Our new, robust Economic Mobility Program helps families achieve financial independence through:

- Living-Wage Career Pathways through employer partnerships
- Financial wellness skill-building in partnership with Operation HOPE
- Navigating the complex social safety net system
- Connecting with affordable childcare solutions

In 2022, Imagine LA will launch an Economic Mobility Expansion Pilot to serve 100 new families via partnerships with:

- Upward Bound House
- The Whole Child
- Children's Institute, Inc.
- Union Station Homeless Services



## Economic Mobility Highlights



### Hired Jazmin Perez, Economic Mobility Manager

"In my decade in the financial capabilities field, I have repeatedly seen the barriers that families experience due to systemic oppression. When we work as an equal partner with families as they access living-wage careers, enhance their financial skills, and carefully and safely navigate the social benefits system, we can disrupt systems of oppression and the cycle of generational poverty."

**28** families enrolled in Financial Fitness

**9** families started a new job or a training program via our Living-Wage Career Pathways

Launched revamped Financial Fitness program with Operation HOPE

Social Benefit Calculator concept won USC Min Family Challenge and USC/Rose Hills Foundation Social Venture Coaching Competition

Published "Examining the Complex Social Safety Net for Low-Income Working Families" with USC Price Center for Social Innovation

Secured Expansion Pilot funding from Wurwand Foundation, Bank of America Neighborhood Builders, and Specialty Family Foundation

# 2

## Family Fun and Wellbeing

Although virtual relationship-building proved to be a challenge for both Mentors and Families during Year 2 of the COVID-19 pandemic, mentors still logged an average of 25 hours of interaction with their mentees.

We hosted six impactful family fun events – all drive-thru style for the safety of all. Check out the photos!

# 194 ATTENDEES!

To meet our families where they're at – LITERALLY! – we added delivery service to our events. Dedicated volunteers stepped up to drive across LA County to deliver essential supplies and fun seasonal items to families lacking reliable transportation or capacity to attend the event in-person.



SPRING GRAB & GO



CELEBRATION OF FAMILY



BACK-TO-SCHOOL BASH



WINTER WONDERLAND



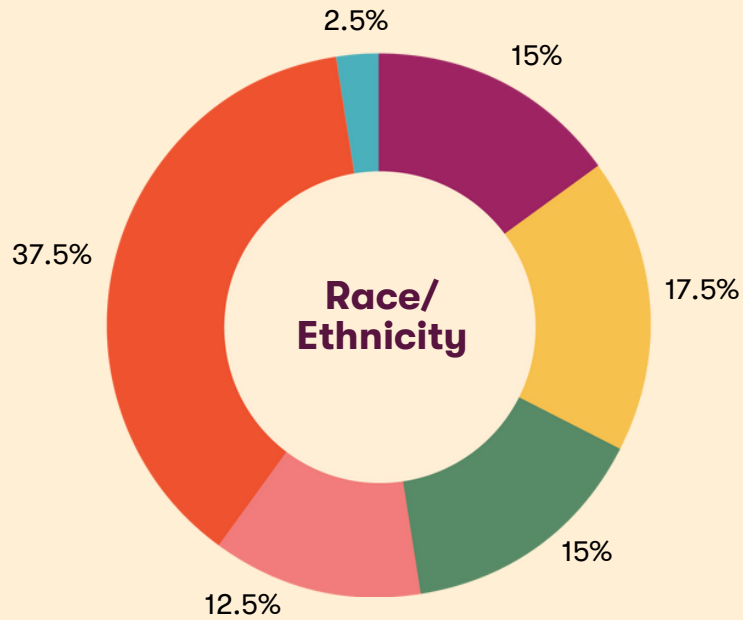
THANKSGIVING GRAB & GO



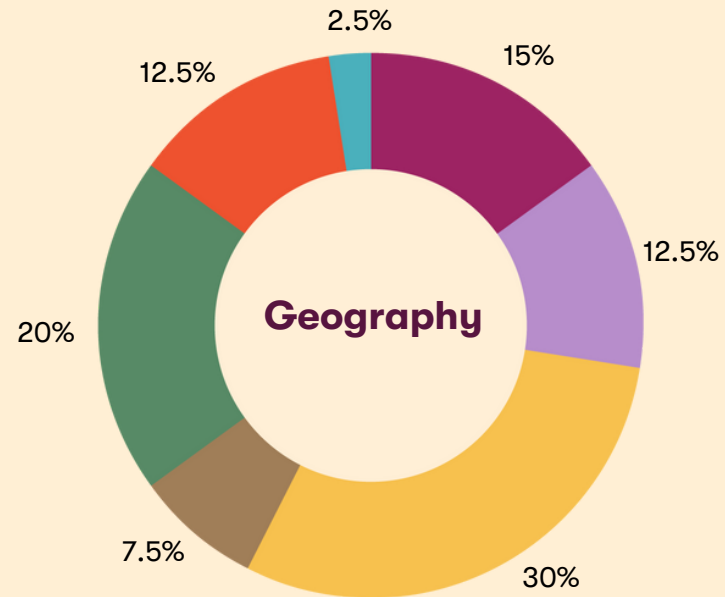
LOVE YOURSELF



# Mentor Ethnicity and Geography



RACE/ETHNICITY	2021
● Black or African American	15%
● Latino	17.5%
● Asian American/Pacific Islander	15%
● Multiracial	12.5%
● White	37.5%
● Other	2.5%

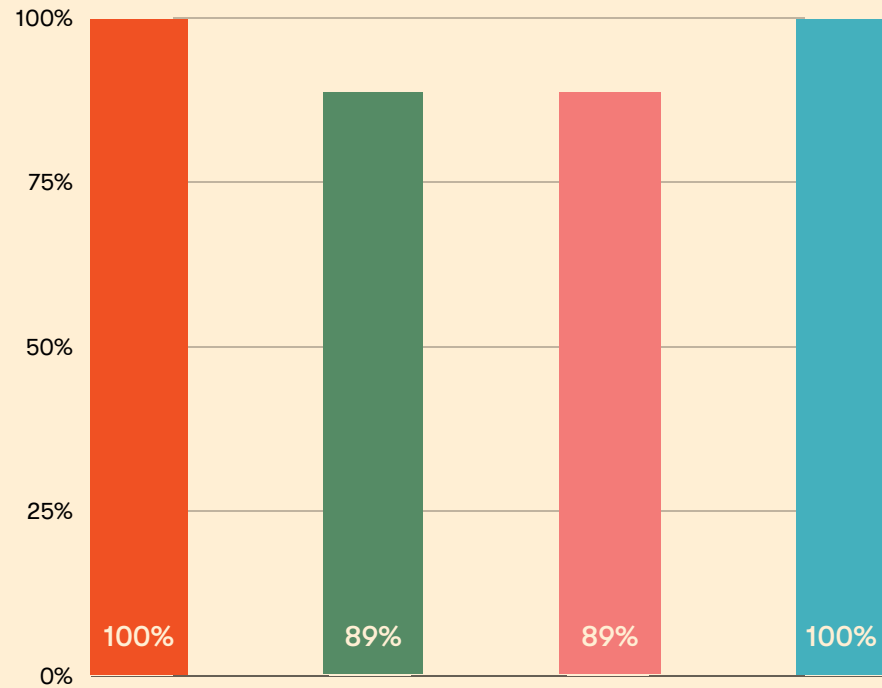


SERVICE PROVIDER AREA (SPA)	2021
● Antelope Valley (SPA 1)	0
● San Fernando Valley (SPA 2)	15%
● San Gabriel Valley (SPA 3)	12.5%
● Metro LA (SPA 4)	30%
● West LA (SPA 5)	7.5%
● South LA (SPA 6)	20%
● Southeast LA (SPA 7)	12.5%
● South Bay (SPA 8)	2.5%



**62.5%**  
of Mentors identified  
as Black, Indigenous  
and/or People of Color

### Mentors Report...



- Feeling they made a positive impact on their mentee's life
- They were able to bring at least one resource to the family
- Increased knowledge of challenges associated with poverty
- Their participation in the Imagine LA program is a good use of their time

# 3

## Community Engagement



Built and equipped a brand-new Development Team under the leadership of Community Engagement Director Brian Rosenbaum



Raised more than \$1,000,000 in foundation grants (for the first time!), including the prestigious national Bank of America Neighborhood Builders award and several new funders, such as Specialty Foundation and Wurwand Foundation



Raised more than \$210,000 and engaged 189 new donors through our year-end Just Imagine Generosity Campaign



Launched the [Heart Club](#), our monthly donor membership program

### Deeper Partnerships!

- Engaged dozens of West LA community partners to provide high-quality Welcome Home Kits to each of the 73 new Missouri Place families
- Expanded our collaboration with City National Bank, Westside Coalition, Operation HOPE, McKinsey & Co., CORT, Cedars-Sinai, SolaWave, Thomas Safran & Associates, SoLa Impact, LA CARE, Cornerstone Church West LA, WARD AME Church, UCLA Center for Community Engagement, USC Code the Change
- Established Community Champions Group and grew to include a family graduate, alumni mentors, and sector leaders



# THE SOCIAL SAFETY NET IS A **STICKY SPIDER** **WEB** FOR WORKING FAMILIES. IMAGINE LA HAS SET OUT TO FIX IT.

What if you made \$26,000 a year and were told that you no longer qualify for food stamps because you were “middle class?” What if you lost crucial income because your child turned 18? What if you were offered the perfect new job but didn’t know whether you would lose your housing when your salary increased?

Over the last 16 years, this has been the experience of Leilani Reed, a graduate of [Imagine LA](#)’s Family Partnership Model, a holistic program that helps families break the cycle of poverty and homelessness.

Our [research](#) with the USC Sol Price Center for Social Innovation revealed exactly how the benefits system works. It found that as families earn more money, they lose roughly the same in social benefits, creating benefit cliffs and resource plateaus that leave a family no better off (and sometimes much worse off!) in terms of total resources available to them. These create disincentives to work and fear of losing benefits.

The study also found that given the high cost of housing in LA, it was impossible for a single mom working full-time to get out of poverty without a housing subsidy such as Section 8. The entrance for receiving benefits is so low that families essentially have to hit rock bottom – that is, become homeless – before they qualify to receive benefits.

**Simply put, the social safety net, while well-intentioned, has become a **complicated, sticky spiderweb**, that **neither acts as a safety net nor a springboard out of poverty.****

Now let’s imagine something different: A set of programs and innovative toolsets that address the social benefit system’s complexities and actually empower families to free themselves from the sticky spiderweb. That’s the gap that Imagine LA is filling.

Imagine LA is expanding its Economic Mobility Program by building a web-based **SOCIAL BENEFIT CALCULATOR**, which will serve as a tool for families and case workers to navigate the complex social safety net system. In addition, Imagine LA will pilot offering its entire Economic Mobility Program, including the Calculator, to 100 new families through partnerships with four social service agencies.

The Calculator will also illuminate what benefit policy changes are needed so that they function effectively, together, as both a safety net and a springboard out of poverty for working families.



“At every turn, I felt like I had one hand tied behind my back!” she said. “How are families supposed to get out of poverty with the system like it is? How can I create a better life for my kids when I hit these roadblocks at every corner?”

“Imagine LA is building such innovative programming to help families like mine,” said Reed. “But as long as the social safety net remains so broken, every family’s journey out of poverty will be that much harder.”



# Building Equity & Capacity

## IMAGINE LA EQUITY STATEMENT

To achieve our vision of building equity together, Imagine LA places social justice, inclusion, empathy, and respect at the heart of our values and culture.

We acknowledge that in order to build and sustain an equitable and anti-oppressive space and culture, together we must embed Equity, Diversity, and Inclusion into everything we do.

With the guidance of Living Unapologetically, we completed and began executing a robust internal EDI assessment and strategic plan, including:

- Full internal organization EDI assessment
- Wrote strategic plan
- New EDI Task Force
- Developed [EDI Statement](#)
- Created our new [Core Values](#)
- Roundtable discussions with staff and board
- Hundreds of hours of training



## STRATEGIC PLANNING

Armed with our 2019-2021 learnings, EDI strategy and momentum, and excitement to take Imagine LA to the next level, we created our [2022-2024 Strategic Plan: Driving Impact, Building Equity, Together](#).

- Facilitated by Center for Nonprofit Management
- Supported by McKinsey & Company
- 83 interviews with families, staff, board, community stakeholders, and subject matter experts

### New Strategic Priorities and Essential Building Blocks



*Undergirded by a strong foundation of*

- A** Financial Durability, Sustainability, and Efficacy
- B** Communications and Marketing
- C** Internal Processes, Systems, and Human Capacity

## STRENGTHENED OUR TEAM

**INCREASED INTERNAL COMMUNICATION** through “PULSE,” a new biweekly publication to foster greater staff and Board alignment to share news, updates, celebrations, and culture.

**FOCUSED ON TEAM WELLBEING** through more virtual and in-person connection spaces for staff, including opportunities for checking in and providing feedback

**GREW OUR TEAM**, hiring nine new team members and creating five new positions

# Sector Leadership and Advocacy

Now more than ever, leadership is needed in the family poverty and family homelessness sector. Imagine LA is proud to be a leader in the field and an active advocate for policy and systems change.

Hosted three impactful and inspiring virtual thought leadership events to advance equity in the sector:

Rising Together:  
Building Equity  
in Organizations

Getting Real  
with EDI Work:  
The Staff  
Perspective

What Does  
It Cost to  
Live in LA?

Sessions were moderated by Charmain Utz, LCSW (Living Unapologetically), and featured Krysta Esquivel (YMCA San Diego), Barbara Bouza (Walt Disney Imagineering), Jennifer Tucker-Tatlow (San Diego State University), Jared Zachary, MPH, CHES (Medicinal Melanin), Monet Bagneris Tolbert, (Imagine LA), Käri Niessink-Takai (Team One), and Henry Gascon and Pete Manzo (United Ways of California)

Community Engagement Director Brian Rosenbaum presented on Imagine LA's approaches to building strategic partnerships, creating transformative volunteer experiences, and driving impact to:

- Directors of Volunteers in Agencies Los Angeles (DOVIA-LA), 2021 Education Day
- Center for Nonprofit Management, 501(c)onference
- Association of Leaders in Volunteer Engagement (ALIVE)
- Nonprofit Learning Lab workshops
- NationBuilder, "Celebration of Giving" panel webinar

Joined coalitions advancing equity in Los Angeles and participated in more than a dozen public policy and systems change advocacy campaigns, including:



# Opening Missouri Place

At Imagine LA, we know that homes and effective interventions can prevent homelessness in the first place.

That's why in 2019, we established a creative partnership with Thomas Safran & Associates (TSA) to **PAIR AFFORDABLE HOUSING WITH OUR FAMILY PARTNERSHIP MODEL** to ensure that low-income families and families emerging from homelessness have the resources and support needed to establish pathways to financial stability.

The **MISSOURI PLACE AFFORDABLE & SUPPORTIVE HOUSING COMMUNITY** in West Los Angeles, which broke ground in January 2020, will house 73 such families. This TSA development will exclusively serve low-income families. Forty-four units are designated as Permanent Supportive Housing (PSH): affordable housing with on-site supportive services for families who are emerging from homelessness. Twenty-nine units are reserved for low-income families.

When the development opens in March 2022, **IMAGINE LA WILL BECOME THE ONSITE SERVICE PROVIDER FOR ALL 73 FAMILIES.** The 44 PSH residents will enroll in Imagine C.A.R.E. and all residents will gain access to Imagine LA's network of resources, signature family fun events, financial fitness programming, living-wage careers pathways, whole-family mentorship, and a year-round calendar of enrichment activities for all ages.



Families will move in to find a beautiful **WELCOME HOME KIT** waiting for them, containing cooking and dinnerware sets, cleaning supplies, bathroom essentials, a doormat and new set of towels, and an air purifier.

The Welcome Home Kits are made possible thanks to the generous support of LA CARE, the Los Angeles Rams Foundation, Cornerstone West LA, Covenant Presbyterian Church, Culver City Presbyterian Church, First Congregational Church of Los Angeles, Holy Family Catholic Church, Islamic Center of Southern California, St. Monica's Catholic Church, Kehillat Israel, Leo Baeck Temple, Temple Emanuel Beverly Hills, CORT Furniture Rental and more than two dozen individual donors.

Missouri Place will feature on-site parking, management offices, office space for Imagine LA staff, a fitness center, and a central community space, which will include a kitchen, library, computer lab and outdoor courtyard or play area.

Missouri Place is the first of six TSA permanent supportive housing developments for families being built in the next three years where Imagine LA will be the onsite services provider.

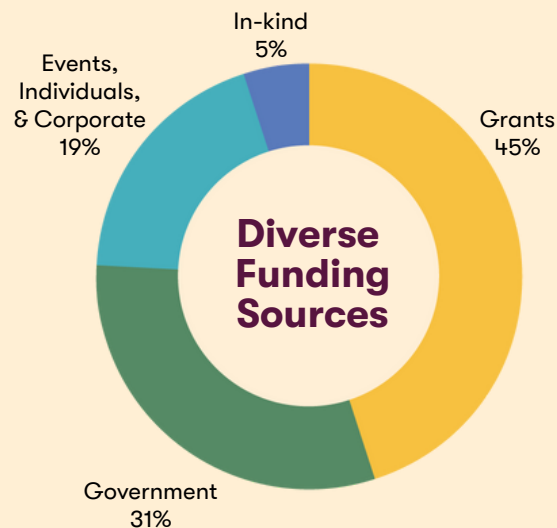
# Financials

## STATEMENT OF FINANCIAL POSITION

ASSETS	2020	2021
Cash	533,200	674,849
Accounts & grants receivable	69,837	440,785
Pledges Receivable	42,821	50,276
Prepaid expenses	32,968	54,256
Property & equipment	52,759	32,560
<b>Total Assets</b>	<b>\$731,585</b>	<b>\$1,252,726</b>

LIABILITIES	2020	2021
Accounts payable	42,561	26,252
Accrued liabilities	92,527	122,227
Line of credit	-	-
<b>Total Liabilities:</b>	<b>\$135,088</b>	<b>\$148,479</b>

NET ASSETS	2020	2021
Without donor restrictions	382,090	544,157
With donor restrictions	214,407	560,090
<b>Total Net Assets:</b>	<b>\$596,497</b>	<b>\$1,104,247</b>
<b>Total Liabilities and Net Assets:</b>	<b>\$731,585</b>	<b>\$1,252,726</b>



The primary impact of the lasting pandemic was lack of event revenue. However, we were able to raise significant donations from individuals and new institutional funders to end the year in a strong financial position.

## STATEMENT OF ACTIVITIES

REVENUES	2020	2021
Contributions and grants	1,005,359	1,658,047
Government contracts	645,373	815,758
Special events, net of expenses	16,899	-
In-kind contributions*	117,922	118,930
Other income	3,412	20,714
<b>Total Revenue &amp; Support</b>	<b>\$1,788,965</b>	<b>\$2,613,449</b>

EXPENSES	2020	2021
Family Partnership Model	1,307,025	1,557,064
Management & general	345,522	284,383
Development	206,075	264,252
<b>Total Expenses:</b>	<b>\$1,858,622</b>	<b>\$2,105,699</b>
<b>Total Changes in Assets</b>	<b>(\$69,657)</b>	<b>\$507,750</b>
<b>Net Assets, Start of Year</b>	<b>\$666,154</b>	<b>\$596,497</b>
<b>Net Assets, End of Year</b>	<b>\$596,497</b>	<b>\$1,104,247</b>

\*mentor hours, goods, and professional services. Mentor hours decreased in pandemic.

# Staff

**Jill Govan Bauman**  
President & CEO

**Jennifer Berry**  
Executive Assistant /  
Development Associate

**Isabel Buster**  
Family Program Associate

**Karinn Cologne, SRHM-SCP**  
People & Operations Director

**Jill Davis**  
Family Team Manager

**Jackie Fierros, MSW**  
Family Team Manager

**Sara Ford Oades**  
Community Engagement  
Intern

**Shimee Gomes, MA**  
AmeriCorps Vista

**Tom Greenberg**  
Family Team Manager

**Toya Johnson, MSW**  
Program Manager

**Kim Kirui**  
Community Engagement  
Associate

**Andrea LeBeouf, MSW**  
Program Director

**Esmeralda Leon, MSW**  
Family Team Manager

**Jay Lytton, MBA, MSW, ACSW**  
Family Team Manager

**Vanessa Monroy, MSW**  
Family Team Manager

**Sasha Morozov, MSW**  
Associate Executive Director

**Lorie Nguyen**  
Lead Family Team Manager &  
Program Development Associate

**Emilee Palau**  
Executive Assistant

**Brian Rosenbaum, MSSW, CVA**  
Community Engagement Director

**Ciera Thornton**  
Program Associate

**Monet Bagneris Tolbert**  
Community Engagement Manager

**Val Vogt**  
Events Specialist



# Donors

Aileen Adams  
Antoinette  
Martha Adams  
Adams Cowan Foundation  
Liz Agans  
Cristina Agra-Hughes  
Ahmanson Foundation  
Nestor Aldaco  
Shannon Allen  
Joy Alonica Bautista  
R. Vanessa Alvarado  
Amazon Smile  
American Realty Advisors  
Patrick Amirbehboody  
Danielle Amoah  
Irene Anderson  
Darene Annette McDuffey  
Anonymous  
Ivena Armand  
Alissa Arst  
John Arthur  
Lorrell Ayers  
Jessica Baptista  
Baby2Baby  
Jules & Michele Bagneris  
Barbara Bagneris  
Richard Ballan  
Zela Balouzian  
Bank of America  
Ritesh Banka  
Stephanie and  
Mason Barker  
Marva Barnes  
Mingyon Barnes  
Barton Family Foundation  
Luma Bashmi  
Rabbi Sarah Bassin  
Paul Beck  
Evie Becky  
Mary Lou Belli  
Elizabeth Ben-Ishai  
Erica Berger  
Peter Bergren  
Raquel and Bryan Berkett  
Charitable Trust  
Rabbi Amy Bernstein  
Jennifer Berry  
Ashley Berry  
Beverly Hills Rotary  
Community Foundation  
Nida Bhimani  
Jess Bialas  
Ann Blanchard  
Marc Blecher  
Jennifer Bonilla  
Joan Boorstein  
Yzel Borja  
Bryan Bortnick  
Adrienne Bosh  
Alyssa and Paul Bost  
Alyssa Bost  
Barbara Bouza  
Harriet Boxer  
Christopher Bp  
Joel Brand and  
Kristina Deutsch  
Ronda Breitbart  
Van Brenner  
Bright Event Rentals LLC  
Renee Brook  
Talon Brown  
Terry Brown  
Troy Brown

Shay Brown  
Katherine Bul  
Matthew Burke  
California Relief Program  
Ronnie Calderon  
California Community  
Foundation  
Richard Cambier  
Scott Campbell  
Capital Group Company  
Arielle Caputo  
Roselia Cardiel  
Alan and Barbara Carey  
Jasmine Cargill  
Debra Carnow  
Lorna Carry  
Daniel Carter  
Dorothy Cauley Johnson  
Cedars-Sinai Medical  
Group and Foundation  
Celeste  
Ellen Cervantes  
Francesca Cervantes  
Brandi Chang  
Remy Chantel  
Bess Chao  
Chris Chapman  
Charter Trust Company  
Rabbi Ken Chasen  
Amrita Chawla  
Chicas Tacos  
Jacqueline Chun  
City National Bank  
Susan Claman  
Blake Coddington  
Mary Louise Cohen  
Chantel Cohen  
Zach Cole  
Elsa Collins  
Bradley Combest  
The Commune  
Shelley Cooper  
Andy Cordon  
Christian Cordts  
Cornerstone West LA  
Kate Corsmeier  
Caroline Cothem  
Country Mart LLC  
Courthouse News Service  
Covenant Presbyterian  
Church  
Vincent Cox  
Vince Cox  
Lisa Crafford  
Lynn Crafford  
Nathan Crafford  
Brian Crewe  
David Crippens  
Anton Cropper  
Culver City Presbyterian  
Church  
Kevin Curran  
Leticia Dacosta  
Digia Dam  
Celestine Davidson  
Laurel Davidson  
LaTonya Davis  
Ryan de Guzman  
Linda Dean

Cynthia Deculus  
Brett Dedeaux  
Stephanie DeLange  
Brian Despie  
Carl and Roberta  
Deutsch Foundation  
Pam Devata  
Brian Dinh  
Peter Dion-Kindem  
Don Levin Trust  
Joan Doren  
Bob Dorf  
Bob and Merrill Dunlap  
Lindsay Dunn  
Eytan Elbaz  
Christine Elliott  
Matthew Elliott  
Encino Neighborhood  
Council  
Richard Erickson  
Salvador Espinoza  
Merani Estrada  
Marisol Estudillo  
Bryan Ezralow  
Marc Ezralow  
Janet and Avi Fattal  
Amanda Feigenbaum  
Jaime Feller  
Erica Fensten  
Tony Ferreira  
Amanda Ferris  
First Congregational  
Church of Los Angeles  
Robert Flutie  
Linda and Martin Frank  
Cassandra Franzese  
Ruby Frazier  
Gary Freedman  
Hovik Gabrielyan  
Evelyn Garcia  
Jessica Garnsey  
George Hoag Family  
Foundation  
Ghj Foundation  
Gi Gi  
The Giving Keys  
Kelly Gibbels  
Victoria Gibson-Bullard  
Brienne Gilbert  
Sondra Goldstein  
Caroline Goldzweig  
Shimee Gomes  
Congressman  
Jimmy Gomez  
Yvette Gonzalez  
Good Today  
David Goodenough  
Andy Goodman  
Margaret Gordon  
Kevin Gore  
Glenn Gottlieb  
Richard Grant  
The Green Foundation  
Kody Greenbaum  
Sean Greenbaum  
Jesse Greenberg  
Jennifer Grudnowski  
Melissa Guerrero  
Phyllis Guze  
Deborah Guzman  
Talbert Habakkuk  
Bonnie Hall  
Kennedy Hamilton

Monica Han  
Chung Han  
Cayla Harmon  
Christina Harris  
Shirley Ann Harris  
Kelley Hart  
Chris Harvey  
Evan Haskell  
Haskell Fund  
Ann Hellreich  
Harold Henry  
Fernando Hernandez  
Logan Herr  
Robert Hicks  
Tabitha Hicks  
Que'Ron Hildren  
Frances Hoge  
Paul Holahan  
Holy Family Catholic  
Church  
Selko Huffman  
Gary Hunt  
Shahbaz Hydari  
Brenda Imes  
Kerim Imes  
Alexander Ingram  
Islamic Center  
of Southern California  
Jason Jablonski  
Ian Jack  
Gary Jacobs  
Jeffrey Jaeger  
Judi Jaffe  
John Jenrette  
Jane Jenlenko  
Gloria Jimenez  
The Johnny Carson  
Foundation  
John & Marilyn Wells  
Family Foundation  
Mash Johnson  
James Jones  
Tina Kahn  
Kaiser Permanente  
Piper Kamins  
Matthew Kamm  
Laura Kanofsky  
Hayley Kaplan  
Mitchell Kaplan  
and Marilyn Jones  
Randall Kaplan  
Samantha Kaplan  
Teddy Kapur  
Karo Karapetyan  
Steven and Julie Karic  
Karisma Foundation  
Andrew Katz  
Steven Katzman  
Monica Kelson  
Amanda Keston  
HarSimran K. Khalsa  
Richard Kidd  
Dana Kiesel  
Kiesel and Larson Law LLP  
Steven Kim  
Gail Kiralla  
Makeda Kiuri  
Julien Kiuri  
Anouk Klapp  
Gina Knox

Beverly Kubik  
LA CARE  
Jeff Lafferty  
Amit Lalji  
James Lam  
Mitch Landau  
James Lane  
Patricia Lankford  
Eileen Lanza  
Nia Lauderdale  
Harold Henry  
Paige Laurie  
The Lawrence Welk  
Family Foundation  
Ken LaZebnik  
Brian Lee  
Esther Lee  
David Leff  
Lisa Lemons  
Mary Lentz  
Steven Leonard  
Samantha Levine  
Andi Levine  
David Levinson  
Karen Lewis  
Mary Clare Lingel  
Carol Renatta Lipscomb  
BaRack Little  
The Little Market  
Keren Looza  
Logotech.com  
Los Angeles Dodgers  
Foundation  
Los Angeles Rams  
Foundation  
Los Angeles Trial  
Lawyers' Charities  
Karrin Lowe  
Roger Lowenstein  
Winnie Lu  
Susan Lubick  
Donald Lubick  
Claudia Luna  
Tanya Mackey  
Lisa Mackil  
Jay Madden  
Gamal Maklad  
Sara Maklad  
Gaston Maluka  
Briana Mandel  
Bara Mann  
Lisa Maqueira  
Marieme Music  
Bonnie Mark  
Amanda Marks  
Suzanne Marks  
Cindy-Lee Marsh  
Jill Martin  
Sabrina Martin  
Maria Martinez  
Carolina Martinez  
Joni and Steve Martino  
Joni Martino  
Shelby Martino  
Sally Martino  
Greg Martino  
Mary & Knox Cologne  
Charitable Foundation  
John Mathews II  
Brittany Matt  
Esther May

Steven & Laura Mayer  
Katy Chen Mazzara  
Katy Mazzara  
Ashley McArdle  
Jim McCabe  
Tim McCaffrey  
Jill McDermott  
Robert McGarry  
Ryenne McKay  
Wendell McKinney  
McKinsey & Company  
Anonymous  
Maritza Medina  
Jill Medintz  
Natania Meeker  
Isabella Melgoza  
Chuck Mejer  
Allison Meyerson  
Elie Michel  
Elissa Miller  
Matt Miller  
LaShawn Miller  
Miller Family  
Charitable Trust  
Carol Mitchell  
Asbit Mordjian  
Mary Mordjian  
Darwin and Sandra Monson  
Stephen Monte  
Joel Moody and Beth Lane  
Doug Moreland  
Joy Morris  
Mortimer Levitt Foundation  
John Mousis  
Minta Mullins  
William Myones  
Chandler Nahigian  
Akira Nakano  
Michael Nebenzahl  
and Rabbi Janet Ofel  
NGA Hancock Park -  
National Giving Alliance  
Dhyanii Nieldelman  
Melissa Nielsen  
Emily Nowlin  
Martina Nucheva  
Jon M. Oades  
Karen Oades  
Sara Ford Oades  
Laura and Paul  
O'Callaghan  
Mark Okuma  
Megan O'neal  
Brittany O'Neil  
Hedy Orden  
Kimberly Ospina  
Mael Otolay  
Melanie Pacheco  
Nilou Panahpour  
John Park  
Bret Parsons  
Liza Pasciuto  
Nicholas Pasqua  
Pathways Foundation  
Richard and Janet Pearson  
Zachary Peoples  
Pfaffinger Foundation  
Emily Phelps  
George Phillips  
Pledgeling Foundation

Moniek Pointer  
Ashley Pollitt  
Karen Prather  
Daniel Prince  
Barnabas Prontnicki  
J. Prospere  
Sara Qazi  
Donya Ra  
Debra Rade  
Melodie Rahbar  
Mike Rakouskas  
Todd Ramasar  
Jose Ramirez  
Veda Ramsey-Stamps  
Rancho Cienega  
Tennis Club  
Khalil Rasheed  
Leilani Reed  
Joe Reichling  
Amanda Reid  
Carol Reid  
Reisasa Foundation  
Nancy and Kevin Rhein  
Bobbie Rich  
Jonathan Richards  
Marissa Richards  
Linda Richardson  
Kathy Richmond  
Richard Riggs  
Karina Rivas  
Roberts Family Foundation  
Cameron Rochte  
Margy Claire Rochte  
Juliana Rodriguez  
Rose Hills Foundation  
Megan Rose  
John Rosenbaum  
Brad Rosenberg  
Vincent Ross  
Rosemary Rozario  
and Rabbi Janet Ofel  
Victor M Ruano Guerrero  
Neal Rubman  
Jeff Runyan  
Vicky Ryan  
Andrew Said  
Elizabeth Saiger  
Lisa Salazar  
Scott Sale  
Robyn Samuels  
Geetheswari Samynathan  
San Marino Congregational  
Church  
Arianna Sanchez  
Heidi Sanders  
Victoria Sando  
Piper Sandler  
Vanessa Sankar Sutherland  
Santa Barbara Foundation  
Leticia Santos  
Michael Sarton  
Ed and Maribeth Scharlach  
Laurie Schechter  
Kevin Scher  
Steve and Amy Schlesinger  
Rebecca Schmidt

Adam Schwartz  
Natalie Scibilia  
Michelle Scott  
Brittany Scott  
Clare Sebenius  
Suzanne Segal  
Michelle Serafin-Seelinger  
Keely Sexton  
Kelly Shapiro  
Deborah Shaw  
Roger Sherman  
Puneet Sidhu  
Melodie Rahbar  
Mike Rakouskas  
Jose Ramirez  
Veda Ramsey-Stamps  
Rancho Cienega  
Tennis Club  
Khalil Rasheed  
Leilani Reed  
Joe Reichling  
Amanda Reid  
Carol Reid  
Reisasa Foundation  
Nancy and Kevin Rhein  
Bobbie Rich  
Jonathan Richards  
Marissa Richards  
Linda Richardson  
Kathy Richmond  
Richard Riggs  
Karina Rivas  
Roberts Family Foundation  
Cameron Rochte  
Margy Claire Rochte  
Juliana Rodriguez  
Rose Hills Foundation  
Megan Rose  
John Rosenbaum  
Brad Rosenberg  
Vincent Ross  
Rosemary Rozario  
and Rabbi Janet Ofel  
Victor M Ruano Guerrero  
Neal Rubman  
Jeff Runyan  
Vicky Ryan  
Andrew Said  
Elizabeth Saiger  
Lisa Salazar  
Scott Sale  
Robyn Samuels  
Geetheswari Samynathan  
San Marino Congregational  
Church  
Arianna Sanchez  
Heidi Sanders  
Victoria Sando  
Piper Sandler  
Vanessa Sankar Sutherland  
Santa Barbara Foundation  
Leticia Santos  
Michael Sarton  
Ed and Maribeth Scharlach  
Laurie Schechter  
Kevin Scher  
Steve and Amy Schlesinger  
Rebecca Schmidt

Megan Tiu  
Ann Tamberlin  
Jessica Torres  
Cambria Tortorelli  
Jennifer Tortorici  
Ryan Trainor  
Michael Turoff  
Alison Turoff  
Chase Tushaus  
Riley Tyner  
Union Bank Foundation  
United Way of  
Greater Los Angeles  
US Trust Bank of America  
USC Marshall School  
of Business  
Ben Valk  
Jon Velin  
Robin Vogel  
Valerie Vogt  
Belinda Walker  
Walt Disney Company  
M. Walton  
Lauren Wax  
Tony Weaver  
Wedbush Cares  
James Weil  
Venera Whitlow  
Fiona Whitney  
James Wiester  
Angela Wilk  
Sherry William  
Deborah Williams  
Susan Wilson  
Winston Philanthropic  
Fund  
Michael Wippler  
Kathy Woodcock  
Jen Woodward  
Mary Woodward  
Wurwand Foundation  
Negin Rostami Yassini  
Becky York  
Jesse Young  
Demetrious Zafiris  
Sasha Zall  
Rachelle Zard  
Zoom Casa, LLC

## KEY

STRIVE (\$100,000+)  
INSPIRE (\$50,000 - \$99,999)  
IMAGINE (\$25,000 - \$49,999)  
THRIVE (\$10,000 - \$24,999)  
EMPOWER (\$5,000 - \$9,999)  
FAMILY (\$2,500 - \$4,999)  
\$1,000 - \$2,499  
\$500 - \$999  
UP TO \$499

HEART CLUST MEMBER



# Partners

A Place Called Home	Culver City Presbyterian Church	Kehillat Israel	Mattel	Rotary Club of Beverly Hills	This is About Humanity
Alexandria House	Didi Hirsch Mental Health Services	Kiesel Law LLP	Mayor's Office for Volunteer Engagement	Salvation Army	Thomas Safran & Associates
ALL HOME	Divine Persuasion Studios	LA CARE	McKinsey & Company	San Fernando Valley Rescue Mission	UCLA Center for Community Learning
Alliance for Children's Rights	Do Good Bus	LA City Council District 11 - Councilman Mike Bonin	MENTOR: The National Mentoring Partnership	San Marino Congregational Church UCC	UCLA Volunteer Center
Andy Goodman, The Goodman Center	Encino Neighborhood Council	LA Family Housing	Miguel Contreras Foundation	Santee Studios	Union Station Homeless Services
Asian Corporate & Entrepreneur Leaders (ACEL)	Everyone In	LA Works	MKW Portraits	Sense of Home	United University Church
Atlantic Federal Reserve Bank	Faith Community Coalition of Greater LA	Larchmont Creative Works	Moving Families Forward	Singer Burke	United Way of Greater Los Angeles
Baby2Baby	Family Promise of the Verdugos	Law Offices of Kelly D. Shapiro	MUFG Union Bank, N.A.	SoLA Impact	United Ways of California
Bel Air Presbyterian Church	First 5 LA	Leo Baeck Temple	National CARES Mentoring Movement	Solawave	Upward Bound House
Big Sunday	First AME Church	Liberty Baptist Church	Nationbuilder	Southern California Edison	USC Bedrosian Center
Bridge to Home	First Congregational Church of Los Angeles	Living Unapologetically	NGA Hancock Park - National Giving Alliance	St. John's Presbyterian, West LA	USC Code the Change
California Landmark Group	First New Christian Fellowship Baptist Church	Logos Faith Development	Noble Accounting	St. Joseph Center	USC Sol Price Center for Social Innovation
California Policy Lab at UCLA	First Place for Youth	Los Angeles County Department of Children & Family Services (DCFS)	North Valley LA CARES Mentoring Movement	St. Monica's Catholic Church	Valley Beth Shalom
Campbell Hall	Friends LA	Los Angeles County Department of Health Services - Housing for Health	Oasis Church	Steve Martino	Vince Cox, Ballard Spahr LLP
Cedars-Sinai	Gensler	Los Angeles County Department of Mental Health	Office of Los Angeles Mayor Eric Garcetti	Stories from the Frontline	Volunteer Collective
Center for Nonprofit Management	Golden State Opportunities	Los Angeles County Department of Public Social Services, CalWorks	Office of Supervisor Holly Mitchell	Su Casa - Ending Domestic Violence	VolunteerMatch
Chica's Tacos	Grace and Wisdom Institute	Los Angeles County Department of Development Authority (LACDA)	Operation HOPE	Sweet LA	Walt Disney Imagineering
Child Care Resource Center	Harrington Group	Los Angeles County Office of Education	Our Future Los Angeles	Target 2143 (Topanga)	WARD AME Church
Children's Movement of California	Holy Family Catholic Church	Los Angeles Dodgers Foundation	Pacific City Church	Temple Akiba of Culver City	Wellnest
Children's Institute, Inc.	Homeless Outreach Program Integrated Care System (HOPICS)	Los Angeles Homeless Services Authority (LAHSA)	Pacific Crossroads Church	Temple Beth Hillel	Wells Fargo
Children's Law Center	Inner City Law Center	Los Angeles Rams	Partners for Children South LA	Temple Emanuel Beverly Hills	Westside Coalition
Chrysalis	Islamic Center of Southern California	Los Angeles Supervisorial District 1 - Supervisor Hilda Solis	PATH: People Assisting the Homeless	Thad's Church	Wilshire Rotary Club of Los Angeles
Churchome	Jeff Jaeger, Standard Companies	Los Angeles Trade-Technical College	Peace Over Violence	The Center	Wisdomania Fest
City National Bank	Jewish Federation of Greater Los Angeles	Los Angeles Trial Lawyers' Charities	Phillips Law Partners, LLP	The Giving Keys	Work for Good
COMMUNE	JMF Development	Marieme Music	Project Giving Kids	The h.wood Group	Zoom Casa
Cornerstone West Los Angeles	Kaiser Permanente		REDF	The Little Market	
CORT Furniture Rental			Relion	The Whole Child	
Covenant Presbyterian Church					
Crystal Stairs, Inc.					

# Onward Together

We're proud to share our [2022-2024 Strategic Plan](#) – Imagine LA's most comprehensive and forward-looking Strategic Plan to date. In 2022 and over the next three years, we will lean into:

- The opening of **MISSOURI PLACE AFFORDABLE AND SUPPORTIVE HOUSING COMMUNITY**, a 73-unit development by Thomas Safran & Associates in West LA, where Imagine LA will serve for the first time as onsite services provider.
- Our **ECONOMIC MOBILITY PROGRAM**, which will see both deep enhancement and maturation during its second year, and our **EMP EXPANSION PROJECT**, which will scale EMP to reach 100 new families through service provision and capacity-building partnerships with four social service agencies.
- Creation of a new **FAMILY IMPACT COUNCIL**, an advisory group for our program, focusing on developing our alumni and youth program components.
- Continuation of our **EQUITY, DIVERSITY, AND INCLUSION JOURNEY**.
- Consolidation of our **DATABASE AND CRM SYSTEMS** into Salesforce (thanks to funding by The Ahmanson Foundation).
- **SYSTEMS-CHANGE WORK** and serving as an incubator for innovative ideas that create meaningful change for families:
  - Development of an online **SOCIAL BENEFITS CALCULATOR** for case managers and families to help them navigate the social benefits landscape.
  - Formation of the state-wide **SOCIAL BENEFIT IMPACT ALLIANCE** to identify and advocate for more streamlined policies and administrative access that prevent family homelessness and promote economic mobility.
- Hiring a **NEW EXECUTIVE DIRECTOR** to lead the continued development of our direct social service programs, while Jill Bauman, who has served as Imagine LA's President & CEO for 15 years, will shift to a parallel leadership position and lead the **EXTERNAL EXPANSION** of our sector leadership efforts and innovation programs.

# Onward Together

Nobody can solve the crisis of family poverty and homelessness alone, and there's nothing we can't do when we work together. Whether you're a community leader, corporate director, faithful congregant, philanthropist, or just someone who wants to take action in Los Angeles, we want to get to know you. And given all that we do, we'll find the perfect way for you to plug into our impact.

Donate

Donate crypto

Become a high-impact volunteer and share your expertise

Volunteer at a family fun or service event

Link us to your corporate, faith or civic group

Provide jobs or internships for our families

Join our mailing list

Become a Mentor

Join the Heart Club



## GET IN TOUCH

The Historic Granada Buildings  
672 S. Lafayette Park Place, Ste. 28  
Los Angeles, CA 90057  
323.944.0210 | [www.imagineLA.org](http://www.imagineLA.org)  
[info@imaginela.org](mailto:info@imaginela.org)

## FOLLOW US



To learn more about Imagine LA visit [our website](#).

For more information about how to get involved with Imagine LA through mentorship, volunteering, partnership or donation, contact

**Jill Bauman**  
President & CEO  
[jill@imaginela.org](mailto:jill@imaginela.org)

**Andrea LeBeouf, MSW**  
Program Director  
[andrea@imaginela.org](mailto:andrea@imaginela.org)

**Karinn Cologne, SHRM-SCP**  
People and Operations Director  
[karinn@imaginela.org](mailto:karinn@imaginela.org)

**Brian Rosenbaum, MSSW, CVA**  
Community Engagement Director  
[brian@imaginela.org](mailto:brian@imaginela.org)

[www.imaginela.org](http://www.imaginela.org)

