



(RE)OPENING DOORS

2022 ANNUAL REPORT

Our Vision

Imagine LA works to end the cycle of family poverty and homelessness. Through a holistic combination of intensive case management, economic mobility programming, and whole-family mentorship — our Family Partnership Model — we prevent first-time and repeat homelessness and equip families to maintain housing stability and thrive long-term.



Our Mission

Together with families, we transform lives by building relationships, wellbeing, and economic mobility.

2022: (RE)OPENING DOORS



Dear Friend of Imagine LA,

The pandemic transformed the way we all live and work. As we navigated the recovery phase, we are pleased that this year our staff and families gradually transitioned back to in-person services, and we are excited to share with you the results of 2022.

2022 was a year of **WELCOMING**

- Welcoming staff back into the office and other safe spaces;
- Welcoming families into new homes;
- Welcoming families and friends to live “in-person” events;
- Welcoming **our new CEO, TuLynn Smylie**;
- Welcoming families back to face-to-face support.

2022 was a year of **GROWTH**

- Serving 275 families – an increase of 32%;
- Most successful Imagine Ball ever – **honoring Magic Johnson!**
- Our revenue increased by 45%.

2022 was a year of **INNOVATION**

- Formed & launched the Family Impact Council;
- **Expanded Economic Mobility Program** to serve families outside of Imagine LA;
- Created the Social Benefit Navigator.

Everything we do is built on a foundation of trust and relationships. Our deepest gratitude goes out to our community of families, staff, board members, donors, volunteers, and partners for your steadfast support as we navigate this ever-evolving landscape together.

Together for Families,

TuLynn Smylie
CEO, Imagine LA

Joe Takai
Board Chair

Jill Bauman
CEO Emeritus & Co-
Founder Social Benefit

WELCOME TULYNN SMYLIE

Imagine LA's new Chief Executive Officer

TuLynn comes to us with more than twenty years of strong nonprofit executive experience. During her tenure as a Chief Program Officer of The People Concern, she supervised many of the agency's major programs, including Interim Housing, K-9 Connections, Health and Wellness, Money Management services, and the agency's Domestic Violence programs. She's the perfect fit to oversee Imagine LA and mobilize our community in support of our mission of ending the cycle of family poverty and homelessness. We are excited to see where Imagine LA will go under TuLynn's leadership!



"The world of Imagine LA has opened up for me, and the possibilities are endless."

– TuLynn Smylie

FAMILY PARTNERSHIP MODEL

In 2022, Imagine LA utilized our Family Partnership Model to walk alongside 275 families (642 individuals) – an increase of 32% over 2021.



A DEDICATED CASE MANAGER PARTNERS WITH THE ENTIRE FAMILY

Compassion. Advocacy. Resilience. Equity.

Caring, holistic case management helps families identify their needs, goals, and clear pathways to success.



FAMILIES ACCESS PATHWAYS AND BUILD SKILLS TO FINANCIAL INDEPENDENCE

Families are provided access to living-wage careers and training, safe and affordable childcare solutions, a comprehensive financial fitness curriculum, and the tools and skills to navigate the complex social safety net.



1-ON-1 MENTORS AVAILABLE FOR EVERY FAMILY MEMBER

Families have access to trained volunteer mentors who serve as friends and allies to every parent, teen, and youth in our program ages 5 and up.



PROGRAM GRADUATES CAN BE PART OF OUR FAMILY FOREVER

Alumni continue breaking the cycle of generational poverty through access to Economic Mobility programming, family fun events, & lasting staff and mentor relationships.

OUR FAMILIES

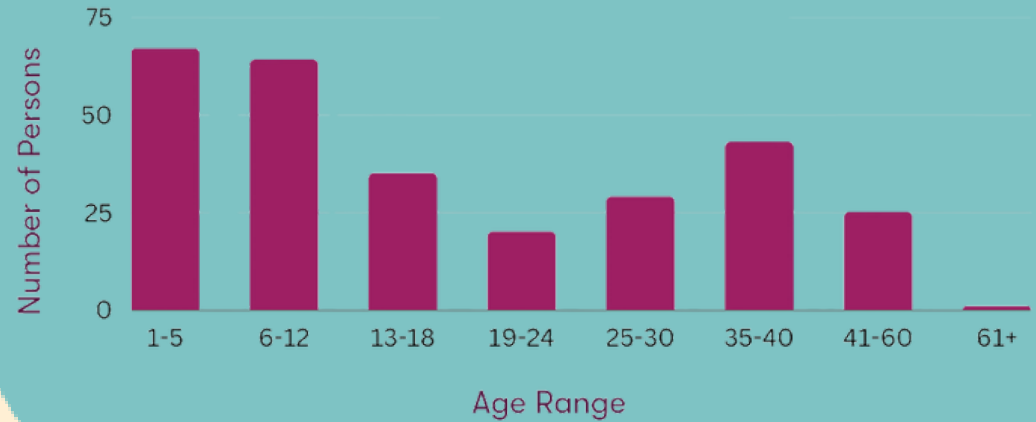
Imagine LA is proud to serve **275 families** whose identities and geographic locations are representative of Los Angeles County as a whole.

The majority of our families identify as **Black/African American or Hispanic/Latino**, with a total of **84%** of our families identifying as **BIPOC**.

Many reside throughout the County in neighborhoods like **West LA, South Los Angeles, Southeast Los Angeles, Mid-City, and San Fernando Valley**.

85% of our families are lead by **unpartnered women**.

Family Members by Age



SPOTLIGHTS ON SUCCESS

LOGAN & KALEAB

Kaleab is from Ethiopia and lives with his mom, grandmother, and two younger brothers. They were housed last year, and Kaleab is currently a sophomore at Cal State LA, where he's studying computer science. When Logan was matched to Kaleab as his mentor through Imagine LA, Logan was immediately inspired by Kaleab's tenacity, "particularly considering the issues and challenges Kaleab has faced personally and throughout the pandemic."

Kaleab recently got involved with STEM Advantage, a nonprofit providing science, technology, engineering, and math (STEM) career opportunities to California State University students, which is opening even more doors for him. Logan's expertise as a systems engineer and business consultant has allowed Kaleab to come to him for homework help and to talk about his career options.



"I'm honored that [my mentee] trusts me and comes to me with questions large and small."

– Logan Herr

MENTORSHIP IS BACK IN ACTION!

In 2022, seventeen new families were matched with mentors, and seventy-six mentors logged 142.5 volunteer hours!

Logan talks about his relationship with Kaleab with words like "Deeper," "Transformative," and "Revolutionary." He and Kaleab are extraordinarily honest with each other, and no subject is too taboo to talk about. They talk about their shared faith during their many hikes, where they forego technology and live in the moment. Kaleab has even joined Logan on a church retreat. Through this shared experience, Logan has learned that no matter how different people are there are always common things that connect us all.

When asked what advice he has for future mentors, Logan responds,

"When you truly invest time, energy, and transparency into your relationships, you find these amazing commonalities. Never give up, be persistent, be humble, and you will help others grow and be changed yourself."



FAMILY FUN EVENTS ARE BACK!

We were so pleased to finally have pandemic restrictions lifted, giving us the opportunity to once more celebrate with families face-to-face at five family fun events this year.



WINTER WONDERLAND



BACK TO SCHOOL BASH



CELEBRATION OF FAMILY



THANKSGIVING GRAB & GO



LOVE YOURSELF

OUR IMPACT

While we still felt the effects of the COVID-19 pandemic in 2022, Imagine LA's programming remained steadfast & our families continued to make strides on their paths out of homelessness.



73 FAMILIES MOVED INTO MISSOURI PLACE, OUR AFFORDABLE & SUPPORTIVE HOUSING COMMUNITY IN WEST LA.



95% OF PARTICIPATING FAMILIES MAINTAINED HOUSING OVER THE 12 MONTH PERIOD.



91% OF FAMILIES REPORTED FEELING EMPOWERED TO FACE & RESOLVE THE CHALLENGES IN THEIR LIFE.



58% OF FAMILY MEMBERS WITH A MENTAL HEALTH NEED AND/OR DIAGNOSIS RECEIVED THERAPEUTIC SERVICES.



73% OF ELIGIBLE FAMILIES FILED THEIR TAXES AND RECEIVED APPLICABLE TAX CREDITS.



96% OF FAMILIES REPORTED FEELING MORE CONFIDENT IN THEIR ABILITY TO ACHIEVE THEIR GOALS AND INFLUENCE THEIR FUTURE.

INTRODUCING OUR FAMILY IMPACT COUNCIL

The FAMILY IMPACT COUNCIL is an advisory group composed of current and former program participants who help shape our current program offerings. Many of these members are ILA Ambassadors, who help us outreach to and engage new families.



In this photo, from left to right:
(Back Row) Andrea LeBeouf, MSW (Program Director), B. Jones, Leilani Reed (Board Member), Maria Oliva (Board Member),
(Front Row) P. Lankford, J. Perez, K. Wilson.

Not pictured: M. Alonso, and C. Green.

OPENING DOORS AT MISSOURI PLACE

The **MISSOURI PLACE AFFORDABLE & SUPPORTIVE HOUSING COMMUNITY** in West Los Angeles opened its doors on July 26, 2022. This Thomas Safran & Associates development was designed to exclusively serve low-income families. Forty-four of the building's seventy-three units are designated as Permanent Supportive Housing (PSH): affordable housing with on-site supportive services for families who are emerging from homelessness. Twenty-nine units are reserved for low-income families.



Families were welcomed into their new homes with Welcome Home Kits!



Thomas Safran, Imagine LA CEO Emeritus Jill Bauman, Mayor Garcetti, & Imagine LA program participant Charneshia G. cut the ribbon!



The West LA building has offices for Imagine LA staff to work on-site.

The Welcome Home Kits were provided by the generous support of Cornerstone West LA; CORT Furniture Rental; Covenant Presbyterian Church; Culver City Presbyterian Church; First Congregational Church of Los Angeles; Holy Family Catholic Church; Islamic Center of Southern California; Kehillat Israel; LA CARES; the Los Angeles Rams Foundation; Leo Baeck Temple; Temple Emanuel Beverly Hills; St. Monica's Catholic Church; and more than two dozen individual donors.

FUELING FAMILY ECONOMIC MOBILITY

Our Economic Mobility Program 2022 Expansion Pilot fueled financial independence via:

- living-wage career pathways,
- financial fitness services in partnership with Operation HOPE,
- access to viable childcare,
- and navigation of the social safety net to 85 new families.



In 2022, we expanded and scaled the Economic Mobility Program development to serve families outside of Imagine LA, thanks to funding from:

- Bank of America's Neighborhood Builders Award,
- The Carl and Roberta Deutsch Foundation,
- and the Wurwand Foundation.

The Economic Mobility Program expansion included 85 families from our organizational partnerships with:

- Upward Bound House
- Children's Institute, Inc.
- The Whole Child
- Union Station Homeless Services

151 families from Imagine LA & partner agencies engaged with EMP.

SPOTLIGHTS ON SUCCESS

SHARDAN

Access to stable, well-paying jobs is one of the most important factors in ending intergenerational poverty, which is why the Living-Wage Career Pathways are one of the most popular components of our innovative **Economic Mobility Program (EMP)**. Although we are still in the pilot phase, EMP has proven to be a gamechanger for program participants, like Shardan.

Shardan, an Imagine LA program participant, graduated from St. Joseph Center's CodeTalk, a Living-Wage Career Pathway that is an intensive and rigorous 16-week technology training program designed to prepare low-income, underemployed and underserved women for entry level careers in coding, UX design, and web development. She not only learned how to code and build websites, but has experienced tremendous personal growth and is now on course for a living-wage career in the technology sector.

Shardan chose the CodeTalk Pathway because of her children, particularly her eldest, an eighteen-year-old daughter with special needs. "My daughter uses a tablet for school every day," says Shardan.



Graduating from CodeTalk gave Shardan hope.

"...With what I'm learning at CodeTalk, I'm better able to support her technology needs. It's a new, exciting world to be a part of!"

Reflecting upon her time in the program, Shardan shares:

"I'm believing in myself more. The program gave me a boost of confidence going into this tough field and being able to get a career that is stable. It means I have hybrid options, or less hours for the same pay, and I can give more time to my kids. I want to be able to work and also watch them grow up."

We are so proud of Shardan, and all of our EMP participants, for the persistence and strength that they demonstrate on their journeys to end the cycles of homelessness and poverty.

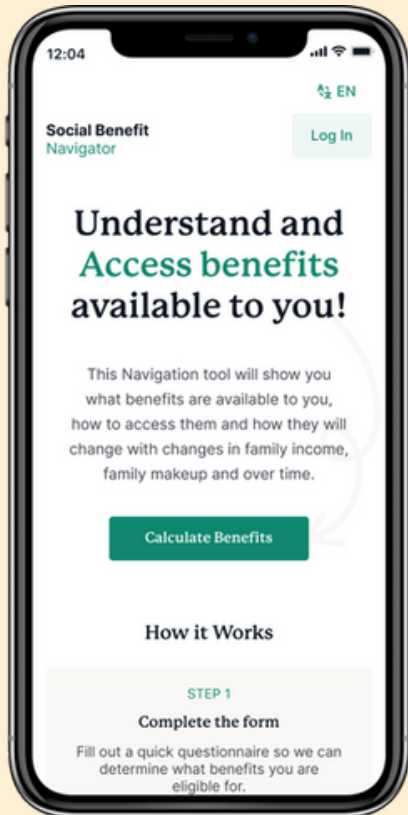
INTRODUCING THE SOCIAL BENEFIT NAVIGATOR

There are over 2 million people living in poverty in Los Angeles who qualify for critical public benefits and tax-credits. Understanding and accessing the complex system of Federal, State, and Local benefits can be difficult for people to navigate, especially those who really need them.

Enter the Social Benefit Navigator - A online tool to quick help Los Angelenos maximize their benefit.



The Social Benefit Navigator is an innovative tool that will empower case managers, individuals, & families to find and access public benefits and tax credits available to them, as well as help calculate how any income changes will affect those benefits. The online tool is:



- **A Benefits Information Hub**

Collects in one place and makes understandable information about mainstream federal, state, and local public benefits and tax credits.

- **A Benefit Maximizer**

Helps individuals and families take advantage of all the benefits for which they qualify. It quickly shows what people are eligible for and provides links and instructions on how to apply.

- **A Social Benefits Planner**

Helps users understand how their benefits will be affected if their income changes – it shows “benefit cliffs” – and it also helps chart a permanent path out of poverty.

- **A Data Collector**

Collects valuable, and currently unknown data about benefits cliffs that will be used to inform policy change to increase the capacity of public benefits to promote economic mobility.

- **Multi-lingual**

Users can find what they need in English, Spanish, and many additional languages.

The Social Benefit Navigator is now in its initial pilot with 10 NGO agencies across LA County. The pilot includes a full third-party impact evaluation. Expanded pilots involving end users and government agencies are planned with a goal of offering the Navigator to the public by the end of 2024. Social Benefit’s efforts are being fueled by grant funding from the Carl & Robert Deutsch Foundation, the Reissa Foundation, the May & Stanley Smith Charitable Trust, and the Conrad N. Hilton Foundation. Additional funding is welcomed!

For more information see www.imaginela.org/social-benefit or contact Jill Bauman, jill@imaginela.org.

BUILDING EQUITY & CAPACITY

IMAGINE LA EQUITY STATEMENT:

To achieve our vision of building equity together, Imagine LA places social justice, inclusion, empathy, and respect at the heart of our values and culture.

We acknowledge that in order to build and sustain an equitable and anti-oppressive space and culture, together we must embed Equity, Diversity, and Inclusion (EDI) into everything we do.

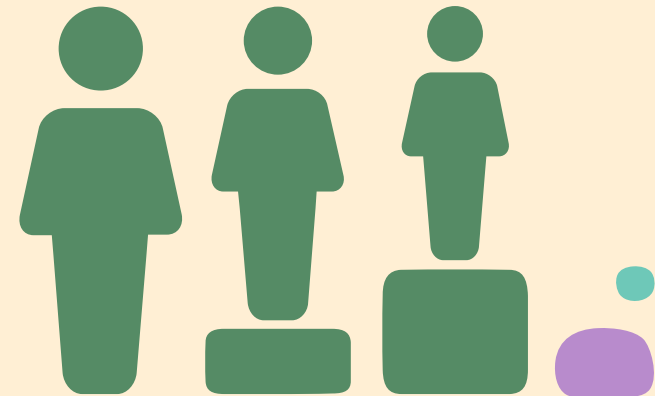
In 2022, the Imagine LA team established clear guidelines, resources, and language supporting our EDI efforts. Surveyed staff reported increased knowledge of inclusive communication.

The team continues to:

- Build shared inclusive language and definitions of both trust and safety (psychological and physical);
- Sustain inclusive decision-making processes that explains how and why decisions get made (as well as incorporates feedback, input, and problem solving);
- Provide clear expectations, accountability, and communication.



We are proud to continue our focus on equity, diversity, and inclusion.



We continue to build relationships and trust - advocating for, supporting, and empowering our team to be valued, heard, and seen on all levels.

We held a training around inclusive leadership, intersectionality, and giving & receiving feedback. We specifically focused on stress and trauma in the workplace, and team building & in-person engagement.

In July 2022, our team met in-person for an all-staff retreat to identify behaviors that were damaging or oppressive and began to address those specified with feedback and self-reflection.

The Leadership Team has embraced their role and responsibility in the EDI process, leading to improved feelings of safety at work by resolving issues through listening, action, and follow-up. Imagine increased its financial investment in the project with the help of a grant from Cedars Sinai, demonstrating a strong commitment to improving the EDI culture at the organization.

IMAGINE BALL

Thanks to the generosity of our community, our annual **Imagine Ball** hit a new record by **raising over \$400,000** to end the cycle of family poverty and homelessness!



Imagine LA program graduate, Faith, presented Magic Johnson with the inaugural Rise Together Award.



Our amazing auctioneer Mellisa with exclusive memorabilia!



The PEPPERMINT Club



This incredible event would not have been such a success without the help of our Imagine LA family:

- Magic Johnson, recipient of our Inaugural Rise Together Award;
- Board Member John Terzian and The h.wood Group, who provided our amazing venue – the Peppermint Club;
- Development & Events Manager Val Vogt;
- Imagine LA Program Graduate and Family Ambassador Faith;
- Performers Ryan Cross Band, superstar Ciara, legends David Foster and Katharine McPhee Foster with Pia Toscano and Daniel Emmet;
- Auctioneer Mellisa Nielsen;
- and delicious food from Chicas Tacos!

Headliner performances provided by musical artists Ciara & Katherine MacPhee Foster.



BOARD OF DIRECTORS

Joe Takai*

Board Chair
Partner, McKinsey & Company

Teddy Kapur *

Board Chair Emeritus
Partner, Pachulski Stang Ziehl & Jones LLP

George Phillips, Jr.*

Board Vice Chair
Chair, Governance Committee
Partner, Phillips Law Partners LLP

Troy Brown

Secretary, Board of Directors
Chair, Community Engagement Committee
VP, Director of Recruitment, Enrollment & Marketing, UWLA

Lindsay Dunn

Board Treasurer
Chair, Finance Committee,
Executive Vice President of Real Estate
Banking, City National Bank

Dana Kiesel, PhD*

Board Chair Emeritus
Chair, Program Committee
Clinical Psychologist, Dana Kiesel PhD

**Previous or current Imagine LA mentor or mentee*



Cambria Tortorelli

Co-Chair, Human Resources & EDI Committee
President & CEO, International Institute
of Los Angeles

Barbara Bouza

Co-Chair, Human Resources & EDI Committee
FAIA, President, Walt Disney Imagineering

Terry Lovell Brown

Community Engagement Committee
Senior Pastor, Liberty Baptist Church

Caroline Goldzweig, MD*

Program Committee
Chief Medical Officer, Cedars-Sinai

Gary Hunt

Social Benefit Committee
Sr. Business Development Executive, Ansys

Maria Oliva*

Family Impact Council & Social Benefit
Committee, Imagine LA
Imagine LA Graduate
Server, Mimi's Cafe

Leilani Reed*

Family Impact Council & Social Benefit
Committee, Imagine LA
Imagine LA Graduate
SEIU Local 2015, Executive Board Member

John Terzian

Community Engagement Committee
Nightlife Entrepreneur - Founding Partner,
The h.wood Group

Diego Torres-Palma

Community Engagement Committee
Nightlife Entrepreneur - Managing Partner,
Ventana Ventures

2022 STAFF

TuLynn Smylie

Chief Executive Officer

Jill Govan Bauman

Advisor, CEO Emeritus
Co-Founder, Social Benefit

Noreen Ahmed, MPP

Family Team Manager

Jennifer Berry

Development Associate

Isabel Buster

Family Program Coordinator

Karinn Cologne

People & Operations Director

Jackie Fierros, LCSW

Senior Program Manager

Darrius Harper

Economic Mobility Program
Manager

Diana Heredia

Economic Mobility Program
Coordinator

Brit Moore Gilmore

Co-Founder, Social Benefit

Claudia Iglesias

Family Team Manager

Chanta Johnson

Family Team Manager

Kim Kirui

Mentorship Program Assistant Manager

Andrea LeBeouf, MSW

Program Director

Brian Rosenbaum, MSSW

Community Engagement Director

Ingrid Seals

Family Team Manager

Jorge Sierra

Family Team Manager

Camielle Shenkin, MHS

Senior Program Manager

Eric Taylor

Family Team Manager

Monet Bagneris Tolbert

Community Engagement Manager

Val Vogt

Events Manager

Marissa Wasseluk

Marketing & Communications Manager

Lauren Zika

People & Operations Manager



FINANCIALS

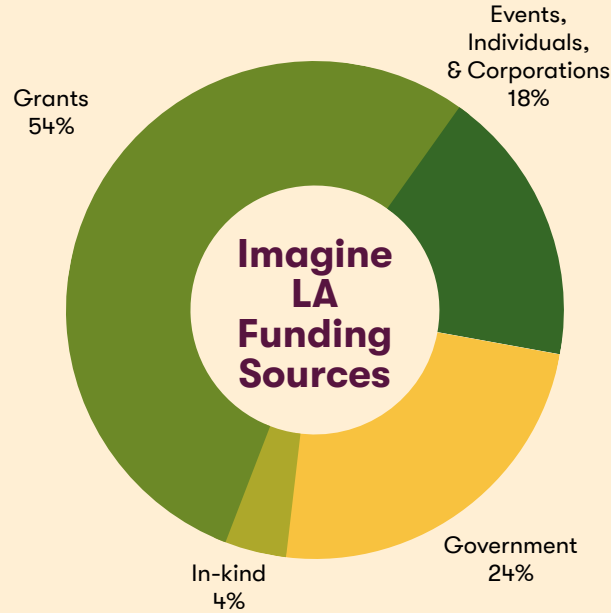
In 2022, Imagine LA's revenue increased by 45% while our expenses increased by 62%. The large majority of our revenue increase was for funding secured for developing the Social Benefit Navigator. Namely the May & Stanley Smith Charitable Trust awarded us \$150,000 and the Conrad N. Hilton Foundation awarded us a two-year \$1,000,000 grant (\$500,000 per year, all of which was recognized as revenue in 2022). Please note that the size of the Hilton Foundation grant skewed our percentage of grant funding for the year to 54%. Usually, Imagine LA's funding is evenly distributed amongst from grants, government contracts, and individuals / events.

STATEMENT OF FINANCIAL POSITION

ASSETS	2021	2022
Cash	674,849	1,300,402
Accounts & grants receivable	440,785	100,516
Pledges Receivable	50,276	529,000
Prepaid expenses	54,256	35,643
Property & equipment	32,560	18,982
Total Assets	\$1,252,726	\$1,984,543

LIABILITIES	2021	2022
Accounts payable	26,252	62,974
Accrued liabilities	122,227	127,723
Line of credit	-	-
Total Liabilities:	\$148,479	\$190,697

NET ASSETS	2021	2022
Without donor restrictions	544,157	751,595
With donor restrictions	560,090	1,042,251
Total Net Assets:	\$1,104,247	\$1,793,846
Total Liabilities and Net Assets:	\$1,252,726	\$1,984,543



STATEMENT OF ACTIVITIES

REVENUES	2021	2022
Contributions and grants	1,658,047	2,271,876
Government contracts	815,758	904,543
Special events, net of expenses	0	423,784
In-kind contributions*	118,930	148,005
Other income	20,714	31,012
Total Revenue & Support	\$2,613,449	\$3,779,220

EXPENSES	2021	2022
Family Partnership Model	1,557,064	2,237,995
Management & general	284,383	385,064
Development	264,252	466,562
Total Expenses:	\$2,105,699	\$3,089,621
Total Changes in Assets	\$507,750	\$689,599
Net Assets, Start of Year	\$596,497	\$1,104,247
Net Assets, End of Year	\$1,104,247	\$1,793,846

*mentor hours, goods, and professional services.

Thanks to our Imagine Ball honoring Magic Johnson, our event revenue topped \$423,784!

DONORS

STRIVE (\$100,000+)

- Bank of America Charitable Foundation, Inc.
- Carl and Roberta Deutsch Foundation
- Conrad N. Hilton Foundation
- May & Stanley Smith Charitable Trust
- Ralph M. Parsons Foundation
- The Rose Hills Foundation
- Reissa Foundation

INSPIRE (\$50,000 - \$99,999)

- Cedars-Sinai Medical Group and Foundation
- Earvin "Magic" Johnson
- Rose Hills Foundation

IMAGINE (\$25,000 - \$49,999)

- Capital Group Companies
- Flora Family Foundation
- Liz Hirsch via Mortimer & Mimi Levitt Foundation
- Isadore and Bertha Gudelsky Family Foundation, Inc.
- John & Marilyn Wells Family Foundation
- Kiesel Law LLP
- Karin L. Larson via California Community Foundation
- Karisma Foundation
- The Lawrence Welk Family Foundation
- Min Family Foundation
- Pfaffinger Foundation
- George and Dina Phillips
- Skylight Foundation
- Walt Disney Company

THRIVE (\$10,000 - \$24,999)

- American Realty Advisors
- Beauty Marks Entertainment
- Carrie Estelle Doheny Foundation
- California Community Foundation
- City National Bank
- Lindsay and Brad Dunn
- Ezralow Company

THRIVE (\$10,000 - \$24,999), continued

- Damian and Carolyn Giangiaco via Nexus Capital Management LP
- Hahn Philanthropy / Ten Oaks Group
- John W. Carson Foundation
- Richard Kidd
- LA Care
- Los Angeles Dodgers Foundation
- Louis L. Borick Foundation
- Mitchell T. Kaplan and Marilyn Jones Fund
- MUFG Union Bank Foundation
- NGA Hancock Park
- Pathways Foundation
- Nancy and Kevin Rhein
- Roberts Family Foundation
- Specialty Family Foundation
- Joe and Kari Takai
- Randall VanWolfswinkel
- Ciara Wilson
- Jan and Stephen Winston

EMPOWER (\$5,000 - \$9,999)

- Aileen Adams
- Bel Air Investment Advisors
- Beverly Hills Rotary Community Foundation
- Joan Boorstein ❤️
- Barbara Bouza Family
- California Wellness Foundation
- Caroline Goldzweig, M.D.
- Gary Hunt
- Jeffrey and Kristen Jaeger
- Randall & Madison Kaplan
- Teddy Kapur
- Dana and Paul Kiesel
- Brian and Mira Lee
- Joni and Steve Martino
- McKinsey & Company
- McMaster-Carr Supply Company
- O'Melveny & Myers LLP
- Nilou Panahpour & Chris Mundy
- SB Capital Management, Inc.
- Doug Schwartz
- Ron Silverman
- Diego Torres-Palma
- Singer Burke
- Logos Faith Development LLC

FAMILY (\$2,500 - \$4,999)

- Abdoulah Household Fund
- Matthew Burke
- Steven Firtel
- Carolyn Giangiaco
- David Goodenough
- Holly Haack
- Haskell Fund
- Heavenly Vision Church
- Kaiser Permanente West LA
- Kehillat Israel
- Josh Kraakevik
- Lafferty Charitable Foundation
- Judy Lam
- Paige Laurie
- Vikas Malhotra
- Network For Good
- Kelly Swanson
- Sara Qazi and Kenner Cooper ❤️
- Linda Rambis
- Michael Scully
- UBS Financial Services Inc.
- Jon Vein
- Wedbush Cares
- James Wiester
- Wilshire Rotary Foundation

EQUIP \$1,000 - \$2,499

- Irene Anderson / Dayton Foundation
- Anonymous Donor
- Jennifer Berry
- Bradford Beck
- Troy Brown
- Capretto LLC
- Ellen Cervantes
- The Charles J. Strosacker Foundation
- Deidra Chattams
- Amy Chen
- Abraham Chesed
- Austin Cloonan
- Knox and Mary Cologne
- Compass Realty
- Martin and Shelley Cooper
- Berta Davis
- Joan and Gerald Doren
- James and Patricia Eddy
- Michael Eddy
- Facebook, Inc.
- Felix Y. Manalo Foundation

EQUIP \$1,000 - \$2,499, continued


- FIGS
- Foundation for Jewish Philanthropies
- Phillip Gee
- David and Jenny Winters Goodenough
- Richard Grant
- Teri and Bruce Greenbaum
- Sherif Guirgis
- Bobbie Howe
- Jane Jelenko
- Joel Landau
- Brian Lee ❤️
- Larchmont Charter School
- The Little Market
- Jill Martin
- Steven & Laura Mayer
- Wendell McKinney ❤️
- Nicole Mutchnik
- Leslee Newman
- Emily Nowlin
- Debbie Ortega
- Vance Owen
- Participant Media
- Piper Sandler
- Jordan Pynes / Thomas Safran & Associates
- Bobbi Rich ❤️
- Rixx Lotion
- Brad Rosenberg
- San Marino Congregational Church
- Ariana Sanchez
- Shelter Partnership, Inc.
- Tricia Small
- Miguel Solano
- David and April Tausik
- Cambria Tortorelli ❤️
- Jeff Trenton
- Turkaloo LLC
- University of West Los Angeles
- Julie Waldorf
- Weingart Foundation
- Wells Fargo Bank
- Jan & Steven Winston

\$500 - \$999

- Jennifer Alfón
- Mauricio Barragan
- Jill and John Bauman
- Erica Berger
- Jessica Borden
- Ronda Breitbard
- Beverly Castaldo-Brown
- Michael Chaikin and Robin Spencer
- Cynthia Deculus
- Michael Feiner
- Michelle Gomes
- Alexia Grevious
- Holy Household Church ❤️
- Kabob by Faraj
- Marla & Michael Kantor
- Beverly Kubik
- Mary Lentz ❤️
- Miller Family Charitable Trust
- Carol L. Mustone
- Michael Nebenzahl and Rabbi Janet Offel
- Melanie Palmer
- Patricia's Art
- Taylor Marie Phillips & Melkon Avetisyan
- Martin Plourde
- Jose Ramirez
- Caterina Rando
- Suzanne Segal
- Deborah Shaw
- Kari Simmons
- Southern California Edison
- Maryam Talaie ❤️
- Donald Swift ❤️
- Katherine Villasenor

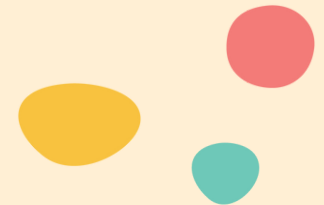
DONORS

UP TO \$499

- Thomas Albon
- Jennifer Alfon
- AmazonSmile
- Angel Amezcuita
- Can Anbarlilar
- Atlas Indicators Investment Advisors, Inc.
- Mary Pat Avery
- Vahan and Liza Bagamian
- Kelli Barmasse
- Robert Barnes
- Jessica Beck
- Paul Beck 
- Judith Bedrosian
- Tyff Bell
- Mary Lou Belli 
- Bemelda Bragado
- Ruthe Benton
- Marc Blecher 
- Blue Shield of California
- Yzel Borja
- Alyssa & Paul Bost Family
- Daniel Braun
- Renee Brook
- Grant Brooks
- Nancy Brown
- Georgia Brunetti
- Nicholas Buckenham
- The California Endowment
- Louella Calingo
- Ariana Campbell
- Autumn Campbell
- Fern Campbell
- Judith Campbell
- Maureen Cannon
- Natalya Cappellini
- Arielle Caputo
- Sarah Carnabuci
- Joyce Carney
- Andrea Ceragioli
- Miriam Chavez
- Chingonas, Inc.
- Eun Sun Chung
- Church Women United Los Angeles Unit
- Dawn Clark
- Natalie J. Clayton
- Alex Comfortes
- Ila Corcoran
- Covenant Presbyterian Church
- Culver City Presbyterian Church
- Kevin Curran
- Kitty Darson 
- Jamie Davis
- Lindsey Davis
- Audrey Delaney
- Lindsay DeLorenzo
- Nathalie Ekobo
- Brett Erickson
- Peter Estares
- Jean Fontana
- Fox Corporation
- Pam Friedman
- Brianne Gilbert
- Elsa & Larry Gillham
- Jane Gilman
- Brit Gilmore
- The Giving Block
- Tamara Golden
- Jan Goldsmith
- Gina & Kevin Gore
- Steven Gorokhov
- Megan Graham
- Noa Grant
- Sean Greenbaum
- Laurie Guiles
- Lucas Marcel Gyuldemirian
- Aaron & Mary Hackett
- Chung Han
- Elizabeth Hardiman
- Emma Harper
- David Harris
- Hart Ludy Charitable Fund
- Belinda Harvey
- Ann Hellreich
- Pam and Willie Hodges
- Melody Ho
- Husang Hwang
- Shahbaz Hydari
- Ali & Becca Iali
- Brenda Imes
- Sachin Jain
- Brenda Imes
- Sachin Jain
- The Jarboe Family
- Jeremy Jepson
- Gloria Jimenez
- JoJo Rings
- Randi Jones 
- Jordan Johnson
- Tina Kahn
- Josh Kamensky
- Piper Kamins
- Laura Kanofsky
- Rabbi Jim Kaufman
- Antoinette Kelly-Brown
- Amanda Keston
- Audree and Howard Kiesel
- Chris Kiesel
- Joyce Kleiffeld
- Sean & Susan Kneafsey
- Debra Kohls
- Mindy Lake
- Fabien Lamaison
- Jason Lambert
- Mitch Landau
- Ken LaZebnik 
- Jeanne Lee
- Erica Levin
- Samantha Levine
- April Lindh
- Melissa Lindstrom
- Mary Clare Lingel
- Lisa Lubick
- Kimberly Little
- Patricia Lombard
- ToiShawn McGlover-Jeffrey
- Amanda McKamey
- Jay Madden
- The Maron Family
- Sherry Martinez
- Sally Martino
- Maria T. Mirabal
- Esther May 
- Maritza Medina 
- Natania Meeker 
- Melany Rodriguez
- Diana Miller
- Elissa Miller 
- Pamela Mills
- Robert Mischel
- Rachel Molina
- Lawrence Monson
- Doug Moreland
- Samantha Moritz
- Chalaun Mosley
- Shannon Murphy
- Mellisa Nielsen
- Jonathan Noah
- Megan O'Neal
- Kathryn Paine
- Alex Parajon
- Christopher Perry
- Nicole Phillips
- Stephen C. Phillips
- Kyle Pierce
- Phyllis Pieri
- Janice Prior
- Leif Quinlan and Sandy Hernandez
- Jennifer Ratkovich
- Red Lotus Wellness Center
- Leilani Reed
- Lisa Reddy
- Ron Reyes
- Maryclaire Rochte
- Patricia Rosenbaum
- Shelley Ruano 
- Pam Rudy
- Jeff Runyan
- Sackcloth & Ashes
- Patricia and Susan Samarge
- Robyn and Bruce Samuels
- Natalie Santiago
- Rich Santos
- Yvonne K. Scarlett
- Keith Schad
- Laurie Schechter
- Ray and Dia Schuldenfrei
- Zabrina Schultz
- Clare Sebenius 
- Bruce Selfon
- Cynthia Shapiro
- Roger Sherman
- Toni & Pam Shur
- Liz Simmons
- Jeannine Singleterry
- The Specter Family
- Cheryl Sommer
- Southern California Edison Law Department
- Aja Steele via Eye Heart Art
- Jessica Steindorff
- Jerry Stern
- Danielle Stevenson
- Bruce Striegel
- Phyllis Pieri
- Kenneth Sullivan
- Lucy Svoboda
- Tammi Robinson
- Richard & Kathy Terzian
- Laura Terry
- Phyllis Thompson
- Michelle Tobar
- Gloria Torres
- Megan Tiu
- Lina Tran
- Ruth True
- United Way of Greater Los Angeles
- United Way of California
- Javier Valladares
- Kurt Vogel
- Robin Vogel
- Valerie Vogt
- Belinda Walker
- Howard & Ruth Wanke
- Elizabeth Watts-Russell
- We Mail For You, Inc.
- James Weil
- Annabeth White
- Venera Whitlow
- Benjamin Winston
- Deborah Williams
- Wood Expressions, Inc.
- Amy Worthington
- Hai Zhang
- Zoom Casa, LLC

PARTNERS

A Community of Friends (ACOF)	Children's Movement of California (Children Now)	Golden State Opportunity	Los Angeles County Department of Public Social Services, CalWorks	Partners for Children South LA	The Little Market
A Place Called Home	Chrysalis	Goodr		PATH: People Assisting the Homeless	The Whole Child
Abundant Housing LA	Church Women United LA	Goodwill Southern California	Los Angeles County Development Authority (LACDA)	Pathways LA	This is About Humanity
Affordable Housing Tax Credit Coalition	City National Bank	Heavenly Vision Church	Los Angeles Dodgers Foundation	Pembroke Taparelli Arts and Film Festival	Thomas Safran & Associates
Alexandria House	Cornerstone Church West Los Angeles	Homeless Outreach Program Integrated Care System (HOPICS)	Los Angeles Homeless Services Authority (LAHSA)	Provider Alliance to End Homelessness - Family Caucus	UCLA Center for Community Learning
ALL HOME	Corporation for Supportive Housing (CSH)	Housing Authority of the City of Los Angeles	Los Angeles LGBT Center	Public Council	UCLA Volunteer Center
Alliance for Children's Rights	CORT	Housing California	Los Angeles Mayor's Office for Volunteer Engagement	Quality over Quantity	Union Station Homeless Services
Andy Goodman, The Goodman Center	Councilmember Mike Bonin's Office	Inner City Law Center	Los Angeles Trade-Technical College	Re-Imagine LA	United to House LA
Archewell Foundation	County Welfare Directors Association 0 CA	Jewish Federation of Greater Los Angeles	Los Angeles Trial Lawyers' Charities	REDF	United Way of Greater Los Angeles
Ascend Initiative at Aspen Institute	Covenant Presbyterian Church	JoJo Rings	Los Angeles Valley College	Relion	United Way of California
Atlanta Federal Reserve Bank	Crystal Stairs, Inc.	JoyWork	Marieme Music	Rocket Doctor	Upward Bound House
AwareNow	Culver City Presbyterian Church	JVS SoCal HealthWorks	Mattel	Rotary Club of Beverly Hills	USC Bedrosian Center
Baby2Baby	Delancey Street	Kaiser Permanente West LA	Mattel Children's Foundation	Salvation Army	USC Code the Change
Basurtos Worldwide	Didi Hirsch Mental Health Services	Keep LA Housed (KLAH) (Inner City Struggle)	McKinsey & Company	Salvation Army Westside Transitional Village	USC Sol Price Center for Social Innovation
Bel Air Presbyterian Church	Divine Persuasion Studios	Kehillat Israel	MENTOR: The National Mentoring Partnership	San Marino Congregational Church UCC	Valley Beth Shalom
Bethel A.M.E. Church, Los Angeles	Do Good Bus	L.A. CARE	Moving Families Forward	SB Capital Partners	VolunteerMatch
Women's Missionary Society	Downtown Women's Center	L.A. Works	National CARES Mentoring Movement	Shelter Partnership	Volunteers of America Los Angeles
Big Sunday	ECE (Early Care & Education) Coalition CA	LA Family Housing	Nationbuilder	Singer Burke	Walt Disney Imagineering
Brilliant Corners	End Poverty in California	Larchmont Chronicle	New Economics for Women (NEW)	SoLA Impact	WARD A.M.E. Church
California Landmark Group	Everyone In	Leo Baeck Temple	Newport Beach Film Festival	Southern California Edison	Wellnest
Bring California Home	Executive Service Corps	Liberty Baptist Church	NGA Hancock Park - National Giving Alliance	SPURS	Wells Fargo Bank
California Landmark Group	Faith Community Coalition of Greater LA	LIFT-LA	Noble Accounting, LLC	St. Joseph Center	Westside Coalition
California Policy Lab at UCLA	FIGS	Limitless Women	NPX Homeless Council	St. Monica's Catholic Church	Wilshire Rotary Club of Los Angeles
Camp Bob Waldorf	First A.M.E. Church, Los Angeles	Logos Faith Development	NuMe	Step Up On Second	Wisdomania Fest
CAPPA Advocacy - California Alternative Payment Program Association	First Congregational Church of Los Angeles	Los Angeles City Council District 11 - Councilman Mike Bonin	Office of Los Angeles Mayor Karen Bass	Steve Martino	Work for Good
Cedars-Sinai	First New Christian Fellowship Baptist Church	Los Angeles Civil + Human Rights and Equity Department	Office of Supervisor Holly Mitchell	Stories from the Frontline	YMCA of Metropolitan Los Angeles
Center for Nonprofit Management	First Place for Youth	Los Angeles County Department of Children & Family Services (DCFS)	Operation HOPE	Su Casa - Ending Domestic Violence	
Chica's Tacos	For Goodness Cakes	Los Angeles County Department of Health Services - Housing for Health	Our Future Los Angeles	Target 2143 (Topanga)	
Child Care Resource Center	Follow the Sun	Los Angeles County Department of Mental Health	Our Homes, Our Votes	Temple Akiba of Culver City	
Children's Defense Fund	Fox 11		Participant Media	The Center	
Children's Institute, Inc.				The Ella Baker Center for Human Rights	
				The h.wood Group	



TOGETHER FOR FAMILIES!

No one can solve the crisis of family poverty and homelessness alone, but there's nothing we can't do when we work together. Whether you're a community leader, corporate director, faithful congregant, philanthropist, or just someone who wants to take action in Los Angeles, we want to get to know you.

Given all that we do, we'll find the perfect way for you to engage with Imagine LA!

GET IN TOUCH

The Historic Granada Buildings
672 S. Lafayette Park Place, Ste. 28
Los Angeles, CA 90057
323.944.0210 | www.imagineLA.org
info@imaginela.org

[Donate](#)

[Become a Mentor](#)

[Become a high-impact volunteer and share your expertise](#)

[Volunteer at a family fun or service event](#)

[Link us to your corporate, faith, or civic group](#)

[Provide jobs or internships for our families](#)

[Join our mailing list](#)

[Donate crypto](#)

[Join the Heart Club](#)

FOLLOW US



To learn more about Imagine LA,
visit [our website](#).

For more information about how
to get involved with Imagine LA
through mentorship, volunteering,
partnership, or donation, contact:

TuLynn Smylie
Chief Executive Officer
tulynn@imaginela.org

Karinn Cologne, SHRM-SCP
Chief Operations Officer
karinn@imaginela.org

Andrea LeBeouf, MSW
Program Director
andrea@imaginela.org

www.imaginela.org

